



# SIGIL

STAKING GUIDE

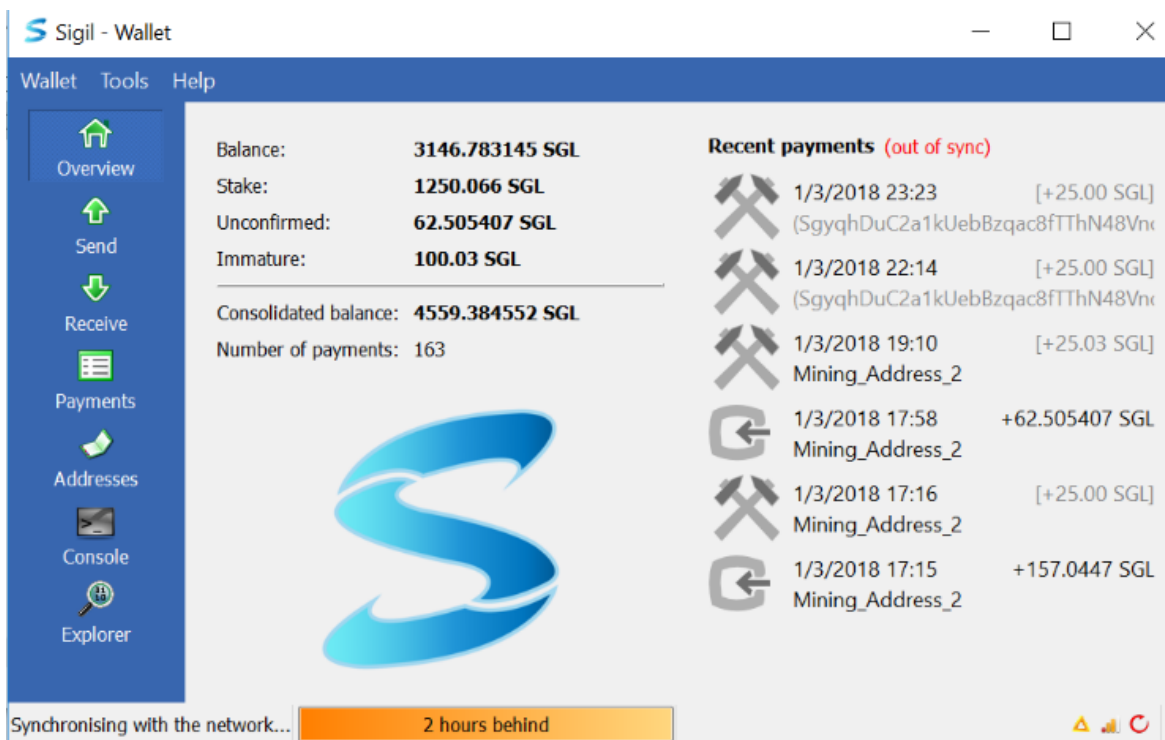
---

# 1 Open Wallet

Given that you're looking up how to stake, I'll assume that you already have a wallet downloaded with coins in it. If this assumption is not true, you can find your OS's respective wallet on the official website: <http://sigilplatform.com/>

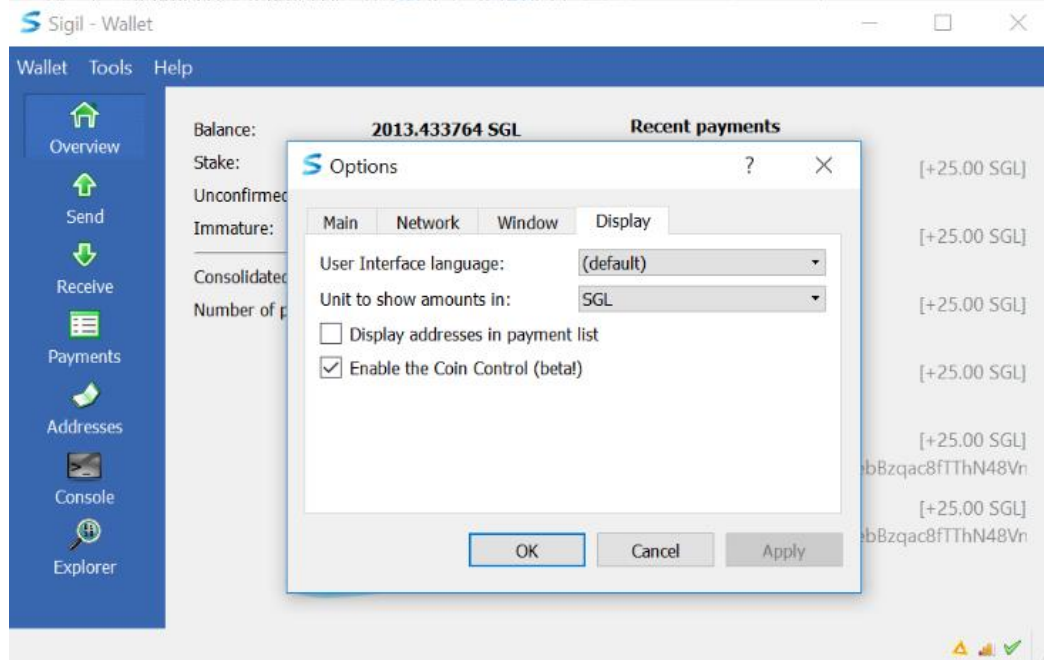
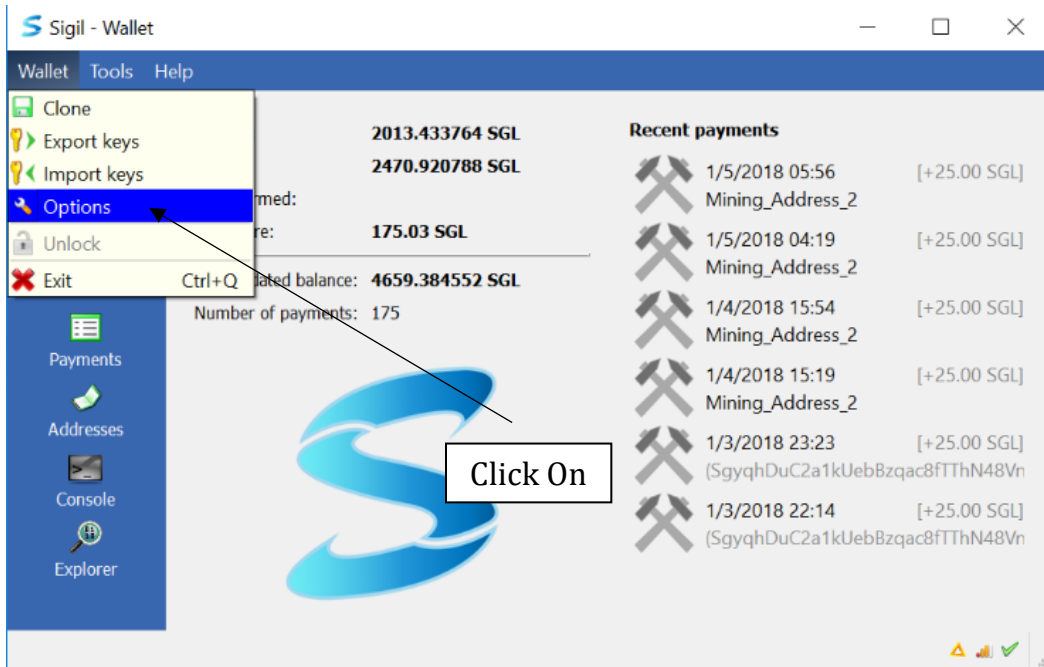
To start off, open your wallet and ensure that your wallet has a balance, and the coins aren't immature. It'll take 80 confirmations before the coins are confirmed in your wallet, and 24 hours before the coins have matured.

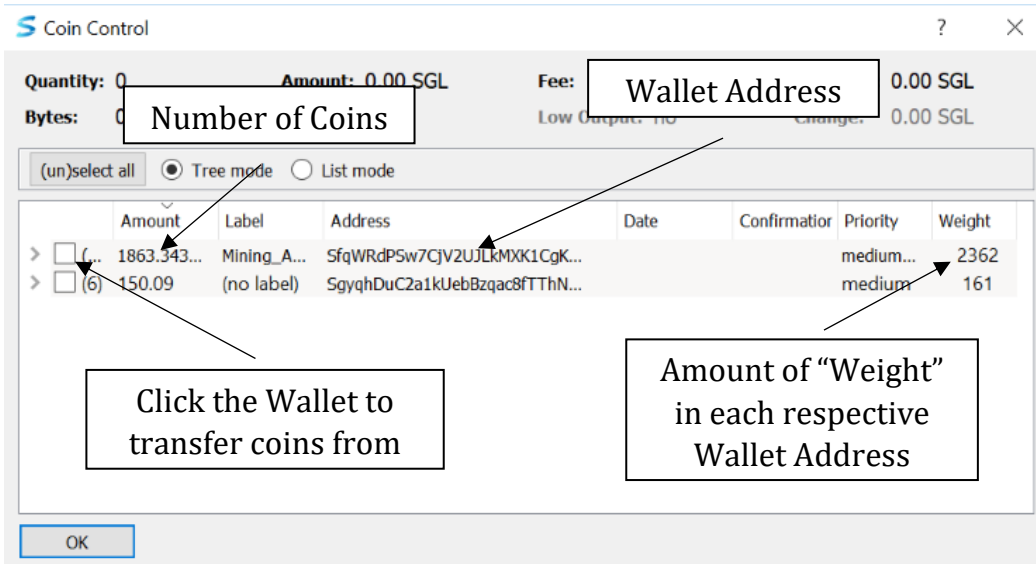
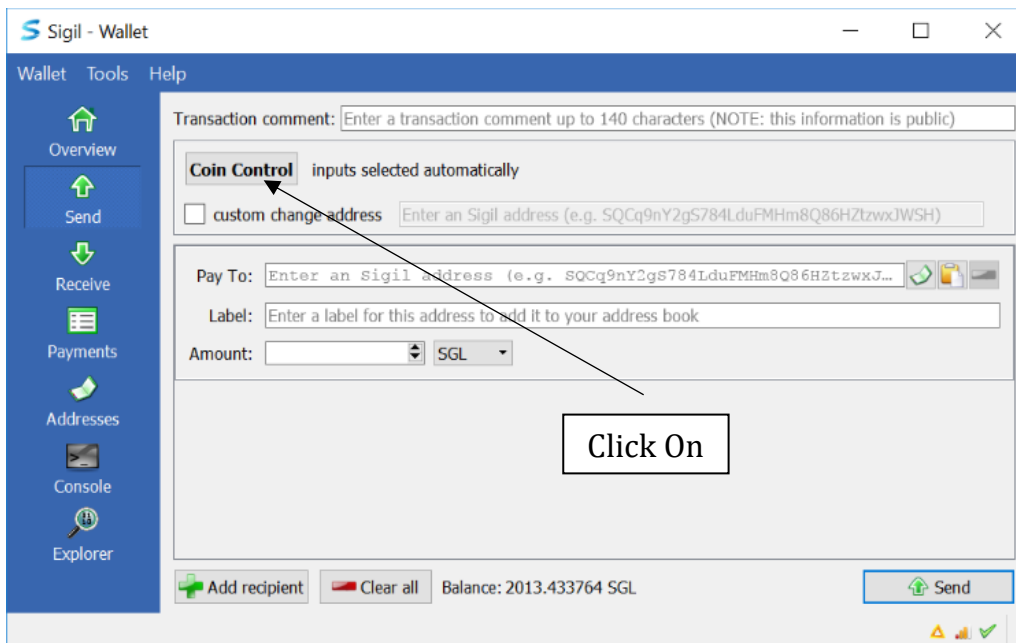
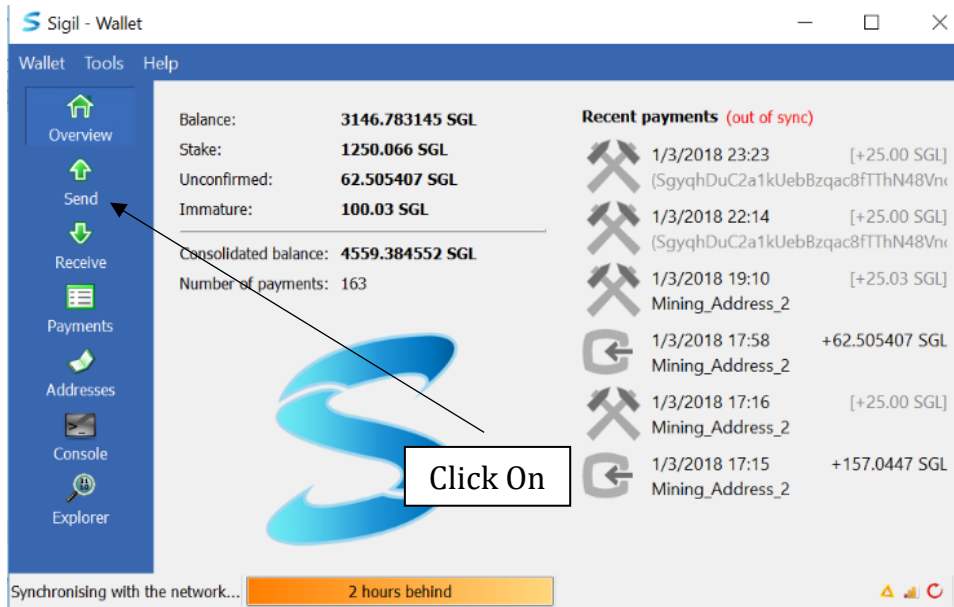
If your coins have matured long enough, you'll see the triangle in the bottom right corner turn orange. This means your coins are staking.

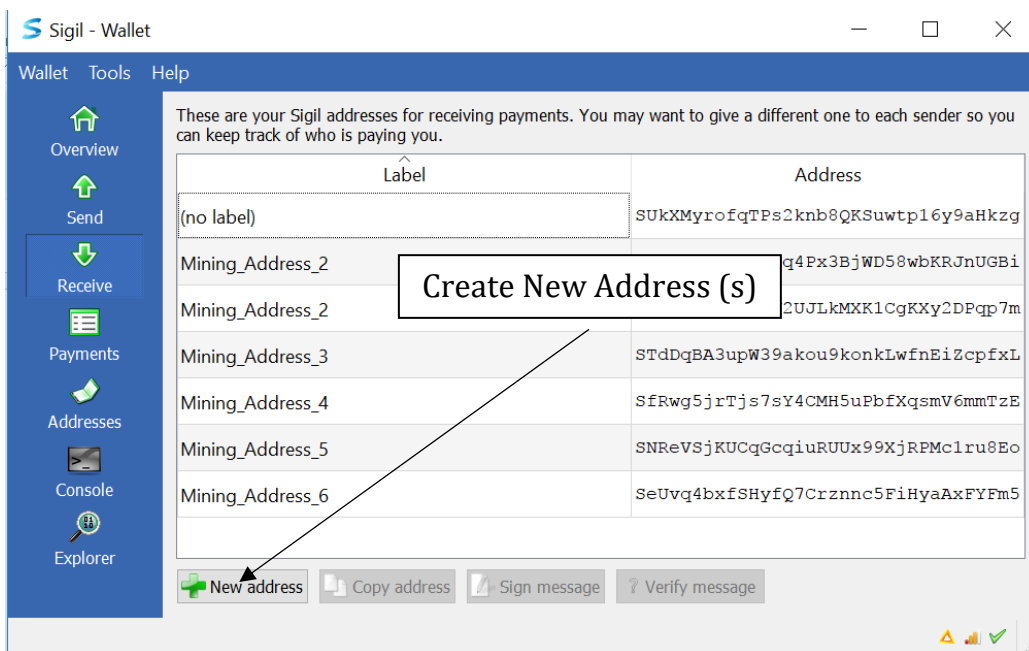
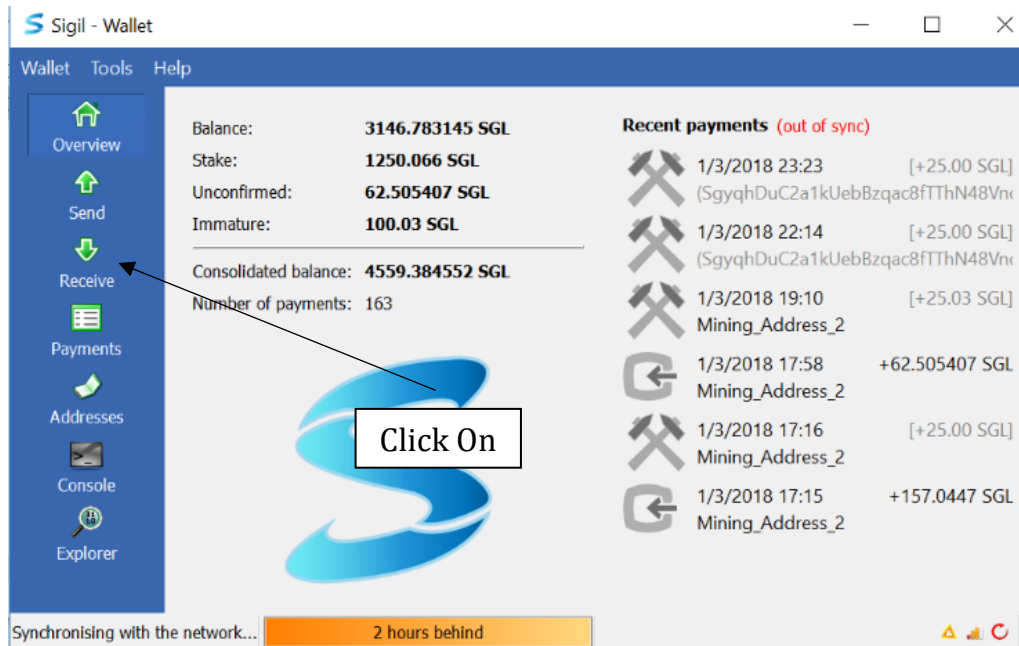


## 2 Advanced / Optimizing Staking

There are a few ways that you can optimize your staking, the most beneficial being splitting your coins into different wallets. Your wallet will do this for you over time, but it'll be much slower as a whole. The reason why this is much better is simply that it allows for you to artificially create more inputs, thus multiplying the number of coins you earn. In order to do this easily, you'll need to activate "Coin Control."







You may create as many addresses as you want, depending on how many coins you have. I don't recommend putting less than 100 coins in any of your new addresses, just to ensure a decent probability of finding a PoS block. The minimum amount required for staking in any address is 50 coins.

Once your new addresses are created, you can now go and send the coins to each respective address.

Overview

Send

Receive

Payments

Addresses

Console

Explorer

Transaction comment:  Enter transaction comment (up to 140 characters (NOTE: this information is public))

Coin Control

Quantity: 11    Amount: 1706.299064 SGL    Fee: 0.00 SGL    After Fee: 1706.299064 SGL  
Bytes: ~1706    Priority: medium-high    Low Output: no    Change: 1606.299064 SGL

custom change address  Enter an Sigil address (e.g. SQCq9nY2gS784LduFMHm8Q86HZtwxJWSH)

Pay To:  sFUcewbdXrnUGq4Px3BjWD58wbKRJnUGBi

Label:  Mining\_Address\_2

Amount:  100.000000  SGL

Balance: 1856.389064 SGL

Wallet Addresses

Total # of Coins

# of Coins to Send

Send Coins

Add More Addresses (Recipients)